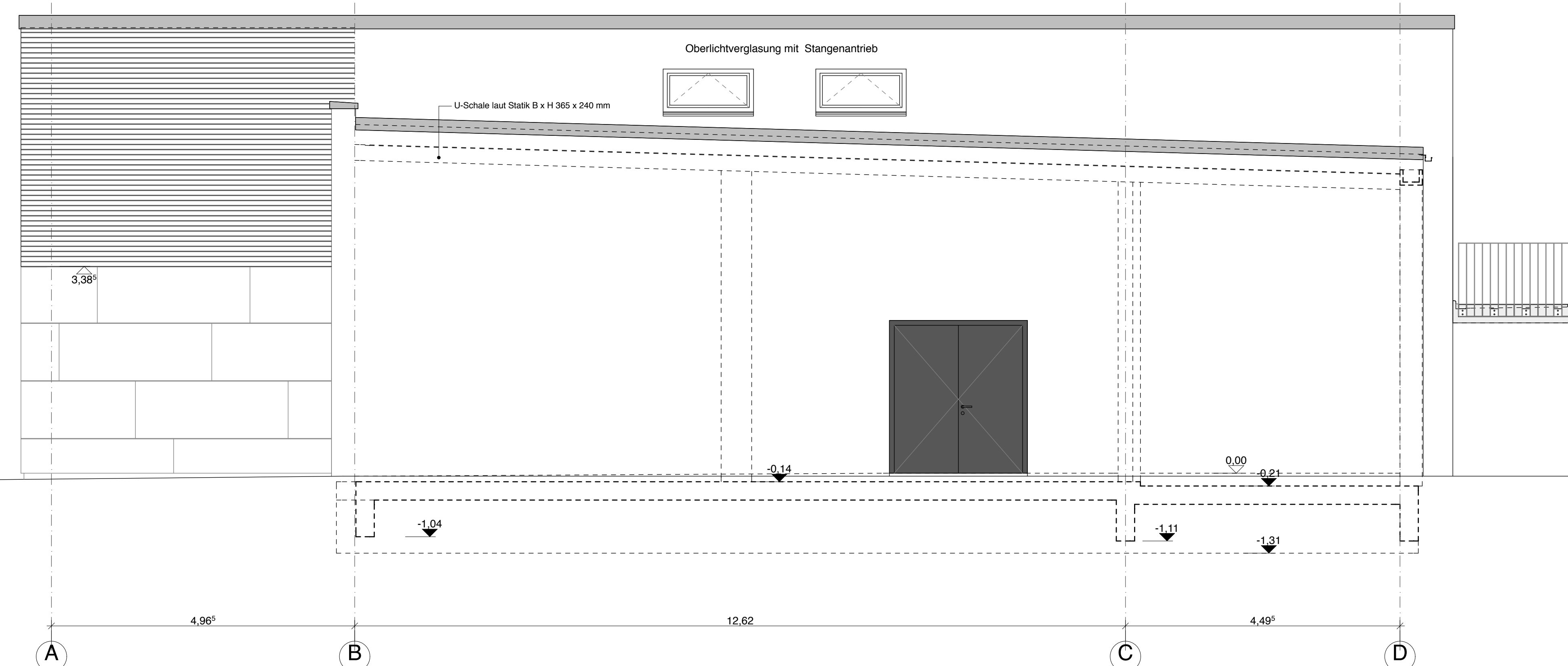


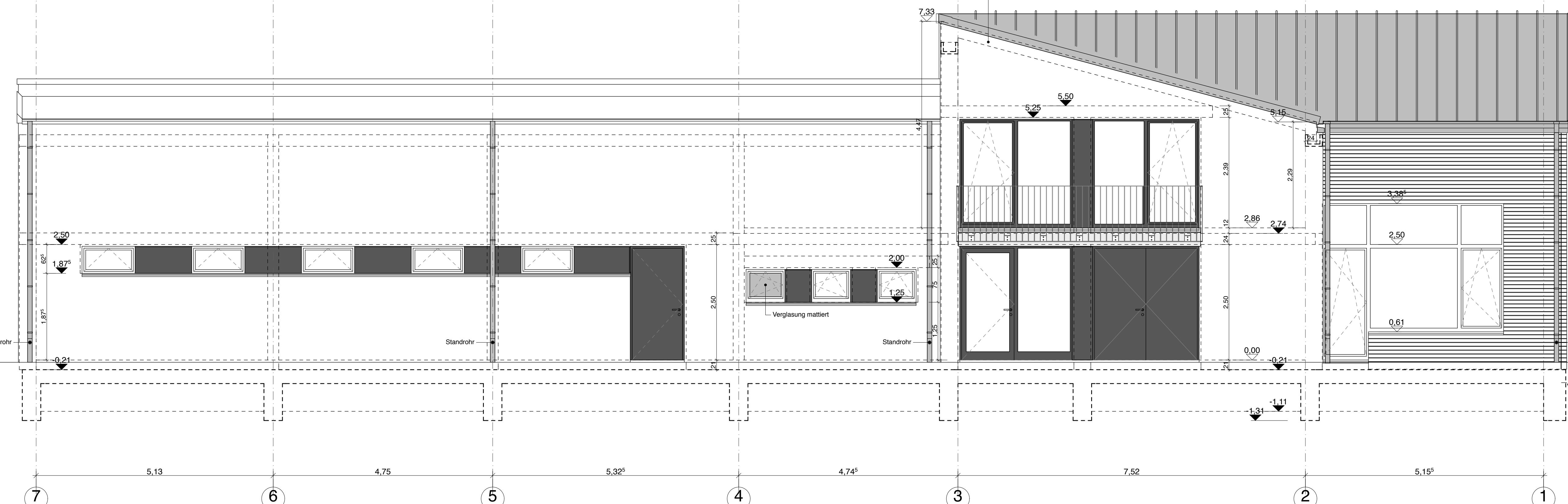
Nordansicht



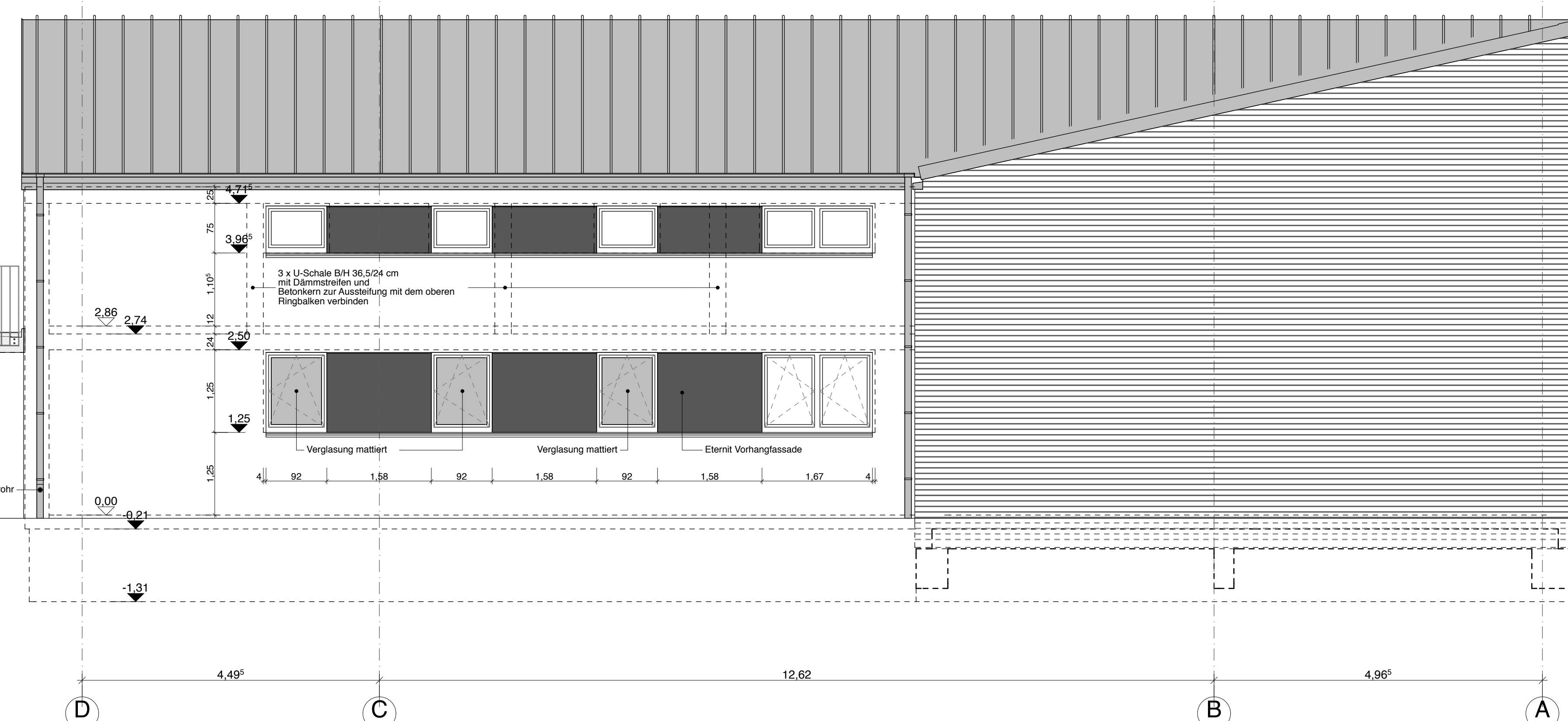
Ostansicht



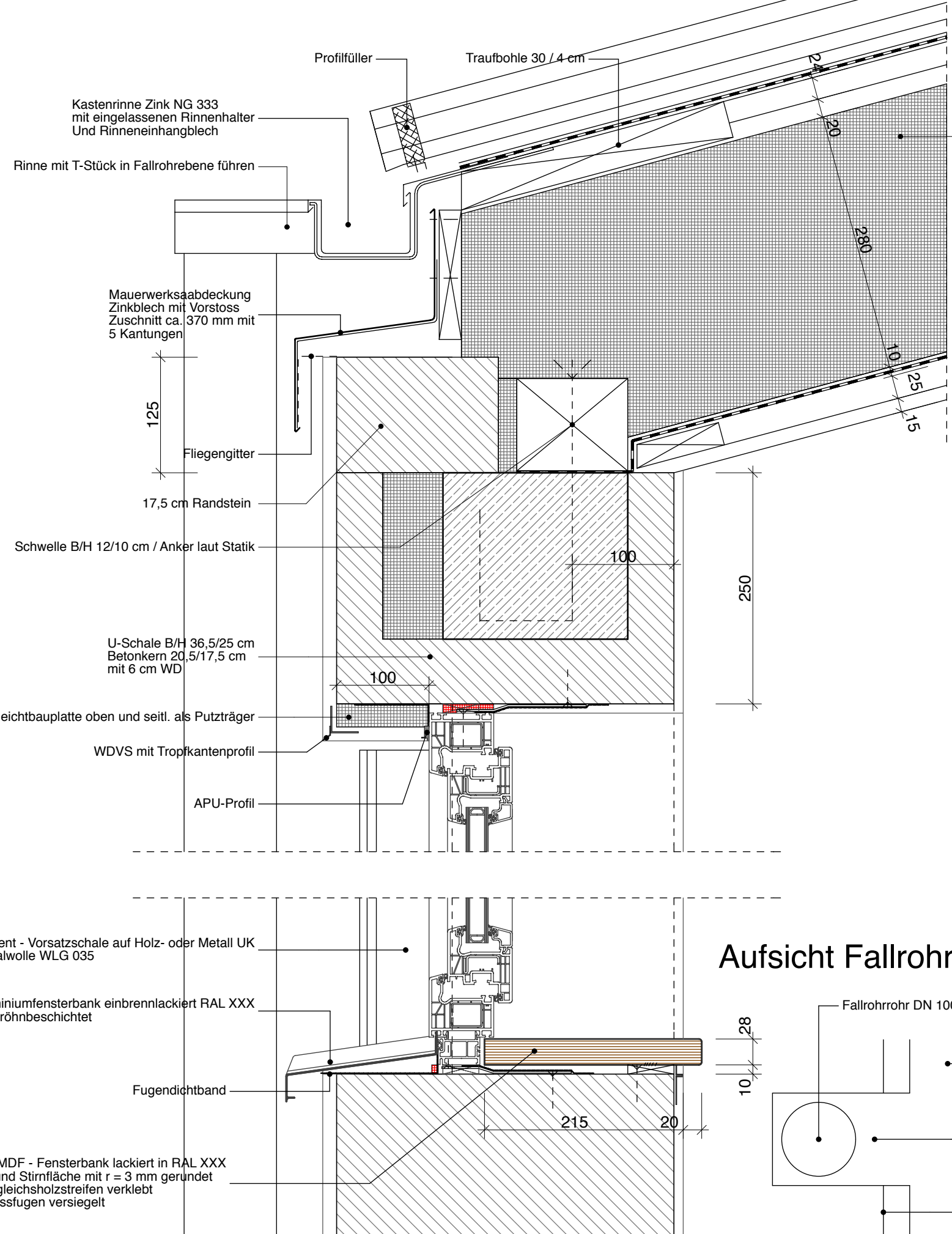
Westansicht



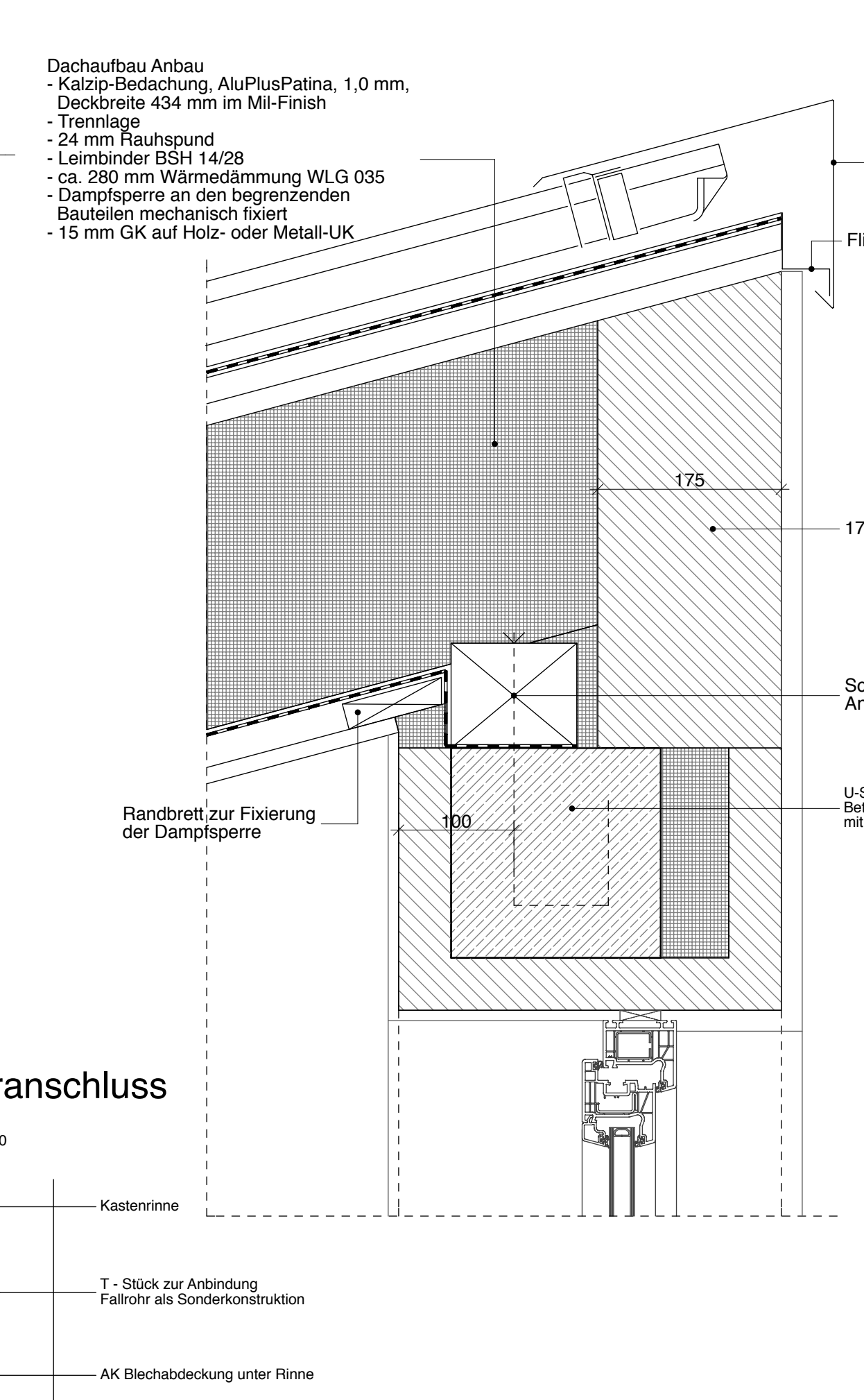
Südansicht



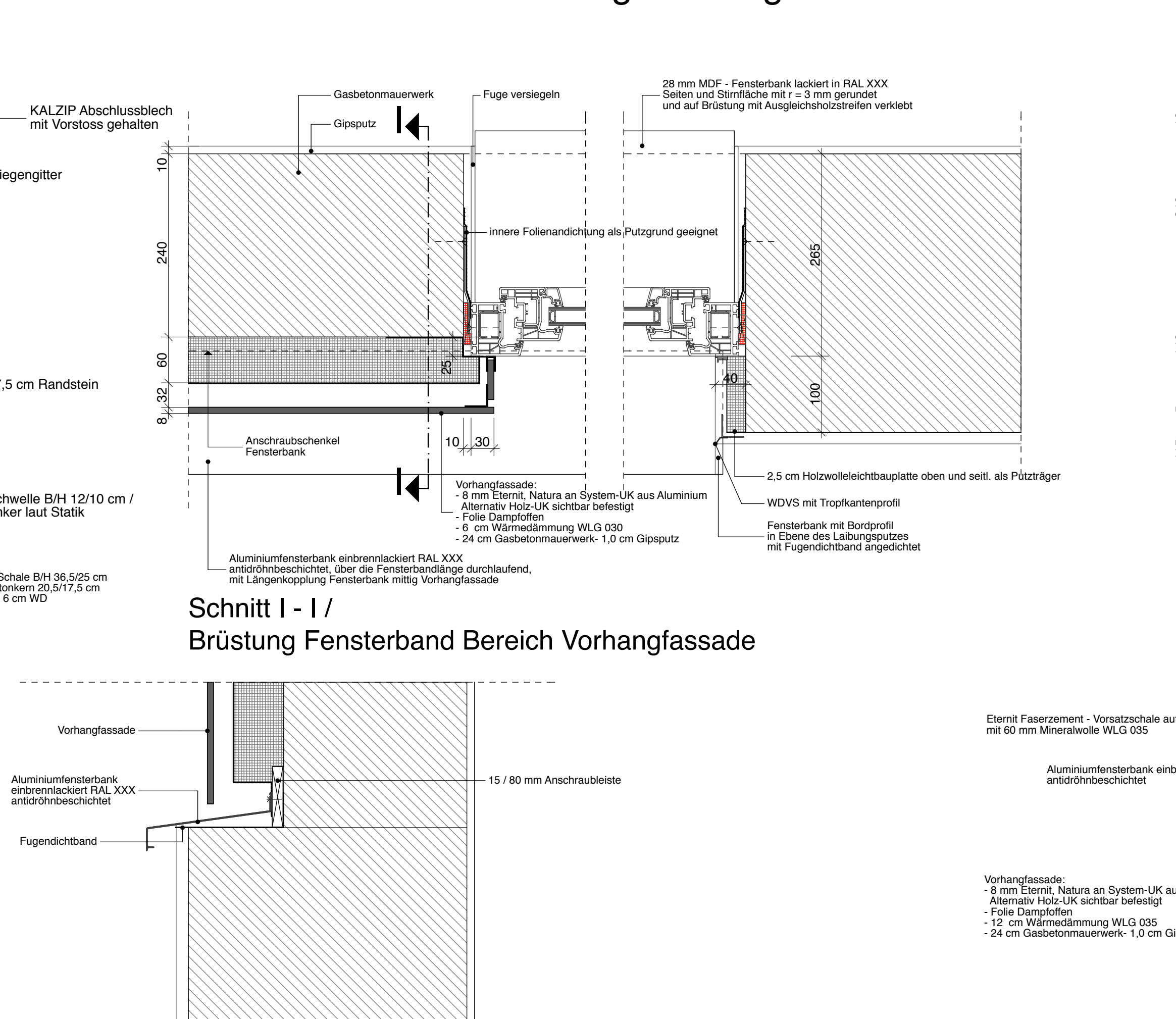
Detail S5.3 / M 1 : 5 Attika Achse 2



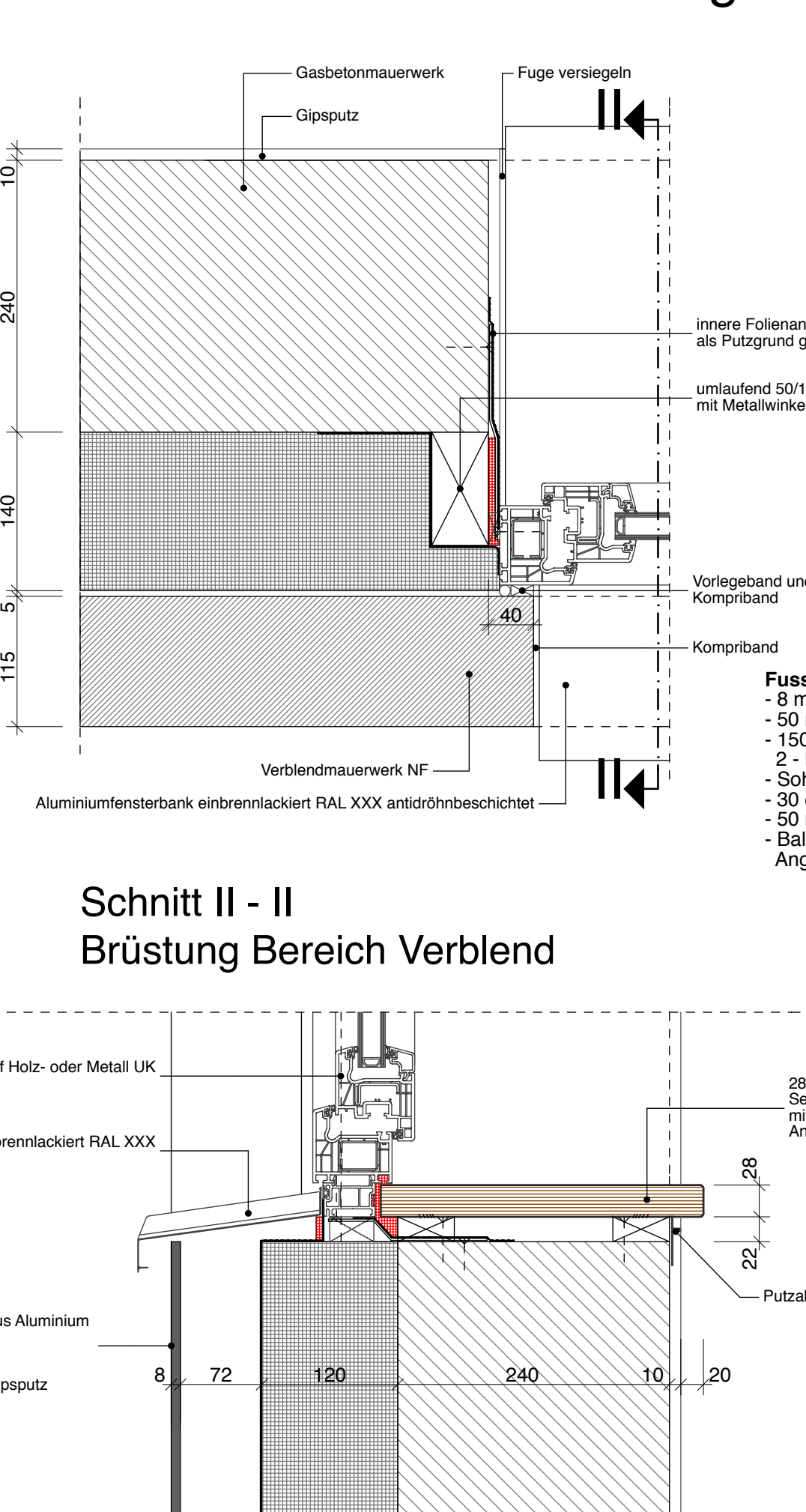
Detail S5.2 / M 1 : 5 First Pultdach in Achse 3



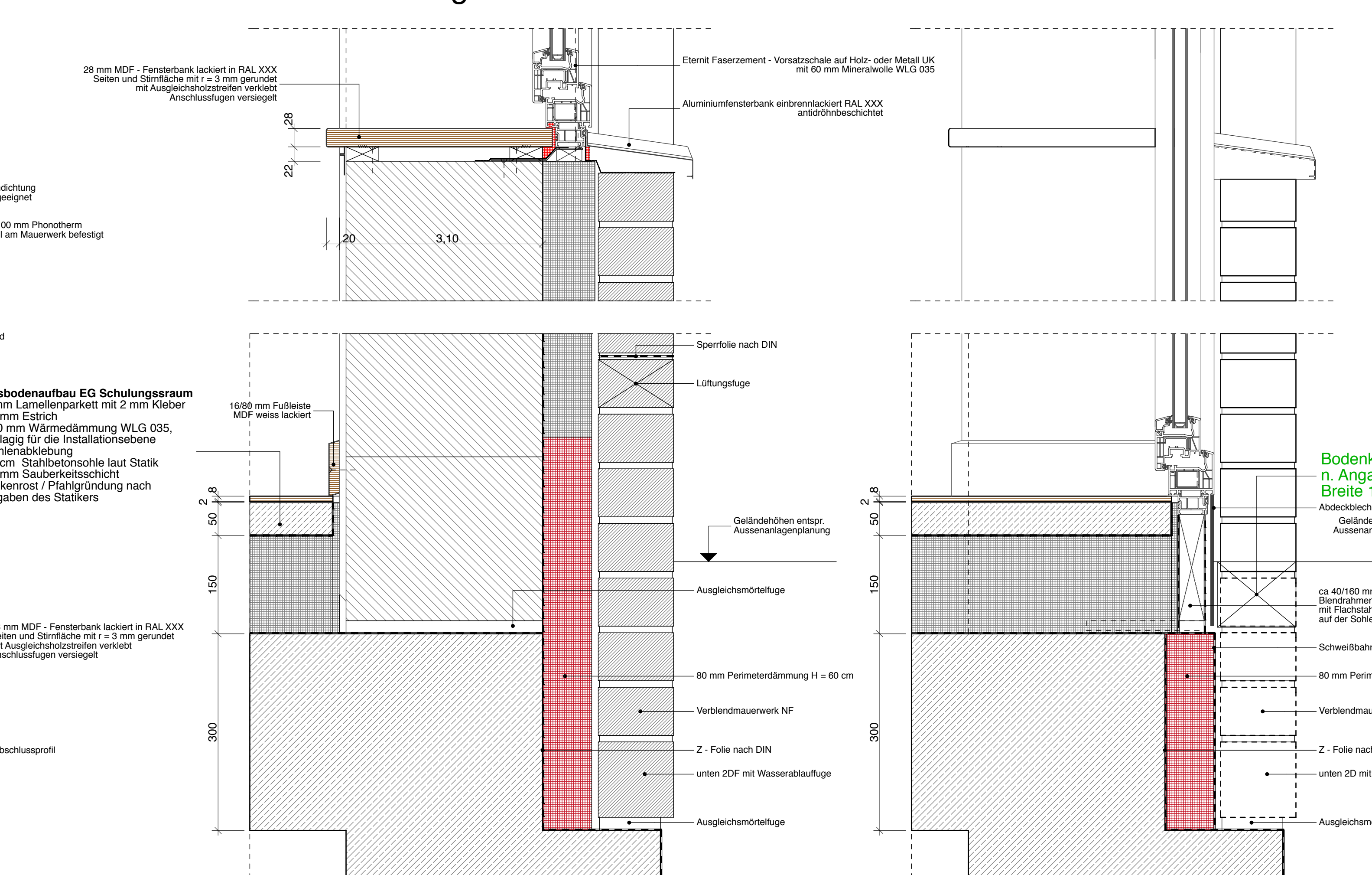
Detail G5.1 / M 1 : 5 Seitlicher Fensteranschlag Vorhangfassade und Standart



Detail G5.2 / M 1 : 5 Seitlicher Fensteranschlag Verblende Bereich



Detail S5.4 / M 1 : 5 Brüstung Bereich Verblend



- Footnote detailing construction specifications for floor, wall, and roof elements, including material types and dimensions.

Legend table defining symbols for materials like concrete, brick, insulation, and window types.

Changes table with columns for index, date, and description of modifications.

0.00 Gebäude = 3.30 m über Normalnull. Disclaimer text regarding the plan's use and liability.



HET Neubau eines Feuerwehrgerätehauses in 25491 Hettingen, Hauptstraße 63

Project information including client details (Gemeinde Hettingen), architect (planpark architekten gbr), and drawing title (Nordansicht, Ostansicht, Westansicht, Details M 1 : 5 Vorabpause Werkplanung).